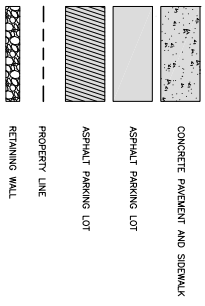


KENNOTES

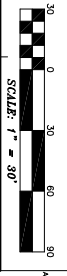
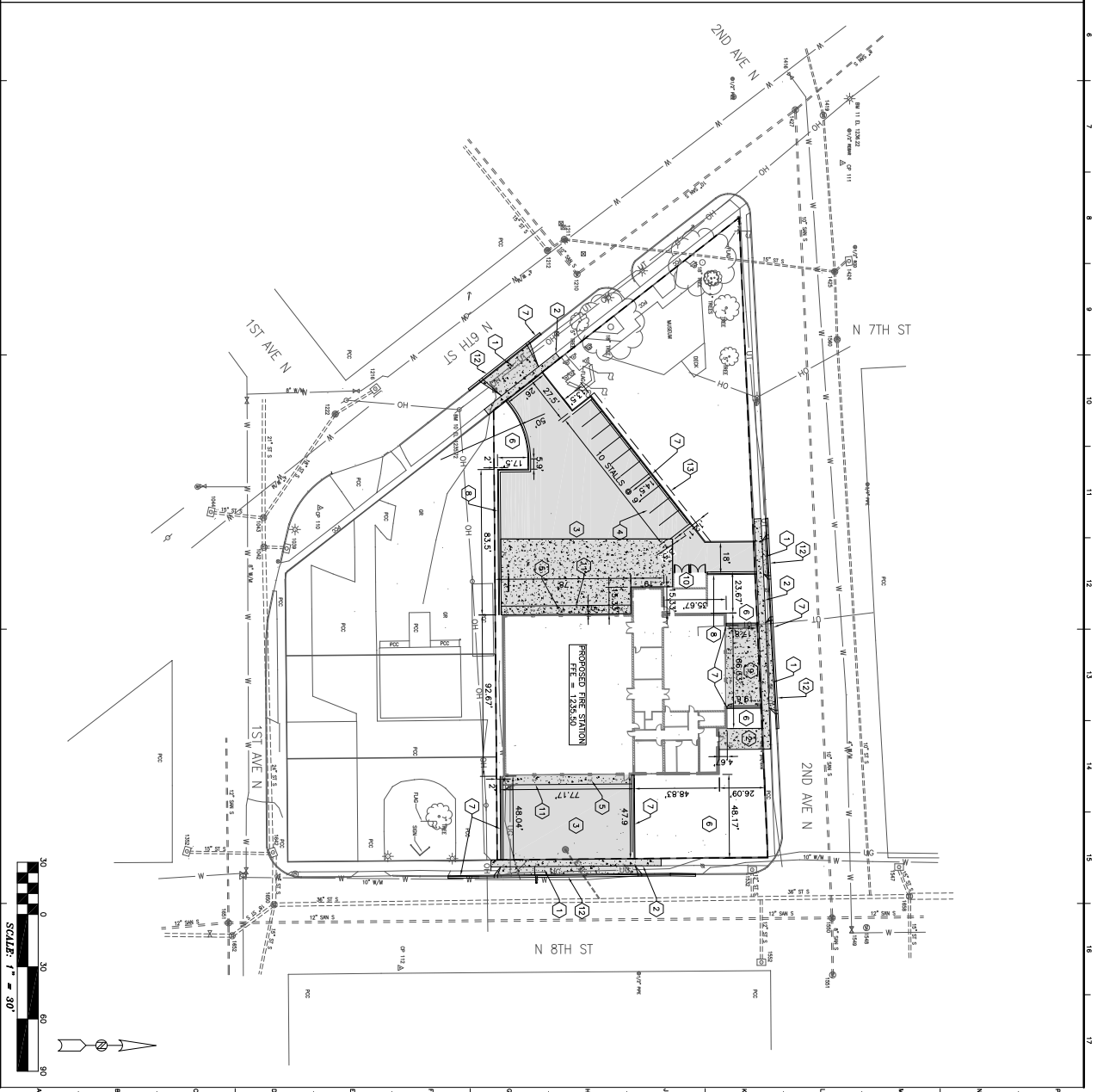
- 1 CONCRETE DRIVEWAY APRON (SEE DETAIL 2F ON C400)
- 2 CONCRETE SIDEWALK (SEE DETAIL 7F AND 8N ON C400)
- 3 HEAVY DUTY ASPHALT PAVING (SEE DETAIL 8A ON C400)
- 4 PAVEMENT STRIPPING (SEE DETAIL 15A ON C400)
- 5 BOLLARD (SEE DETAIL 15L ON C402)
- 6 LAWN
- 7 STANDARD CONCRETE CURB AND GUTTER (SEE DETAIL 11P ON C400)
- 8 REJECT CONCRETE CURB AND GUTTER (SEE DETAIL 11P ON C400)
- 9 HEAVY DUTY CONCRETE APRON (SEE DETAIL 8C ON C400)
- 10 DOWNSPER AREA (SEE DETAIL 11C ON C400)
- 11 CONCRETE STOPS, COMBINE WITH DRAWING ST00
- 12 DRIVEWAY MOUNTABLE CURB AND GUTTER (SEE DETAIL ON DRH1.1)
- 13 3" VENTILATED OVERHANG AREA

SITE PLAN LEGEND



SITE PLAN NOTES

- A. ALL CONSTRUCTION SHALL COMPLY WITH THE PROJECT SPECIFICATION MANUAL, VOLUME OF SPECIFICATIONS AND THE SUPPLEMENTAL SPECIFICATIONS TO THE SPECIFICATIONS. THE MORE STRINGENT SPECIFICATION SHALL APPLY. ALL CONSTRUCTION SHALL BE PERFORMED IN ACCORDANCE WITH ALL LOCAL, STATE AND FEDERAL REGULATIONS.
- B. THE CONTRACTOR SHALL OBTAIN ALL NECESSARY PERMITS INCLUDING SUMMARY PERMITS FROM THE LOCAL AND STATE DEPARTMENTS OF PUBLIC WORKS AND THE LOCAL AND STATE DEPARTMENTS OF HEALTH AND SAFETY. THE CONTRACTOR SHALL PAY ALL FEES. PROVIDE PROOF OF INSURANCE AND ABOVE MENTIONED AND ALL OTHER LOCAL, COUNTY AND/OR STATE ISSUED PERMITS FOR THIS WORK SHALL BE POSTED ON SITE.
- C. THE CONTRACTOR SHALL SUBMIT SHOP DRAWINGS OF ALL PRODUCTS, MATERIALS AND PLAN SPECIFICATIONS TO THE ENGINEER FOR REVIEW AND APPROVAL PRIOR TO FABRICATION OR DELIVERY TO SITE.
- D. CONTRACTOR SHALL FOLLOW CONSTRUCTION SEQUENCE PROVIDED ON THE EROSION CONTROL PLAN.
- E. THE CONSTRUCTION LINES ARE THE WESTERN CURB AND GUTTER, 3RD STREET SIDEWALK, 4TH STREET SIDEWALK AND THE EASTERN RIGHT-OF-WAY LINE OF 3RD STREET AND THE CONCRETE SIDEWALK OF 4TH STREET. THE CONTRACTOR SHALL PROVIDE A 24" WIDE GATE.
- F. PARKING SPACES SHALL BE STRIPPED WITH 4" SOLID WHITE LINE. HATCHED AREAS SHALL BE STRIPPED WITH 4" SOLID WHITE LINE AT A 45° ANGLE, 7" ON CENTER. HATCHING, MARKINGS SHALL BE PAINTED WHITE OR AS NOTED.
- G. THE NORTH-SOUTH REFERENCE LINE IS A LINE CONNECTING THE BACK OF EXISTING SIDEWALK AT THE POINTS WHERE THE NORTH AND SOUTH PROPERTY BOUNDARIES CROSS THE SIDEWALK. THIS LINE AND THE NORTH PROPERTY BOUNDARY ARE THE REFERENCE LINES FOR THE DIMENSIONS OF CURB EXCLUDING RADIUS DIMENSIONS.
- H. DIMENSIONS FROM BUILDING ARE TO FACE OF FOUNDATION WALLS. OTHER DIMENSIONS ARE TO FACE OF CURB EXCLUDING RADIUS DIMENSIONS.
- I. ALL SIDEWALKS ARE 5' WIDE UNLESS NOTED OTHERWISE.
- J. PROPERTY CORNER MARKERS SHALL BE PROTECTED FROM DISTURBANCE. IF DISTURBANCE OCCURS, THE CONTRACTOR SHALL RE-ESTABLISH THE CORNER TO THE ORIGINAL POSITION AND RE-ESTABLISHMENT.
- K. COORDINATE EXACT LOCATIONS OF HANDICAP RAMPS IN THE NEW SIDEWALK AT THE INTERSECTION OF MARKET STREET AND 4TH STREET AND THE INTERSECTION OF MARKET STREET AND 3RD STREET.
- L. SEE DETAILS 15D AND 15E ON SHEET C401 FOR THE STORM PIPE SCHEDULE AND SOWER STRUCTURE SCHEDULE, RESPECTIVELY.



<p>C200</p>	<p>SHEET CONTENTS SITE PLAN</p>	<p>SEH FILE NO. CLR/L107997 ISSUE DATE: September 8, 2009 DESIGNED BY: TAS DRAWN BY: TAS PROJECT MGR: RK</p>	<p>2009 CLEAR LAKE FIRE STATION CLEAR LAKE, IOWA</p>	<p>PRELIMINARY NOT FOR CONSTRUCTION</p>	<p>Short Elliott Hendrickson Inc. Buller Square Building, Suite 710C 100 North Sixth Street Minneapolis, MN 55402-1515 612.758.0700 main 612.758.6701 fax 866.830.3388 toll free www.sehinc.com</p>									
<table border="1" style="width: 100%; border-collapse: collapse;"> <thead> <tr> <th style="width: 10%;">MARK</th> <th style="width: 10%;">DATE</th> <th style="width: 80%;">DESCRIPTION</th> </tr> </thead> <tbody> <tr> <td> </td> <td> </td> <td> </td> </tr> <tr> <td> </td> <td> </td> <td> </td> </tr> </tbody> </table>						MARK	DATE	DESCRIPTION						
MARK	DATE	DESCRIPTION												